

Identify the parts of a poppy flower challenge

Teacher's notes

The big question

What is the significance of the Poppy?

Level

Second

Experiences and outcomes

By investigating the lifecycles of plants and animals, I can recognise the different stages of their development. **SCN 2-14a**

Additional resources

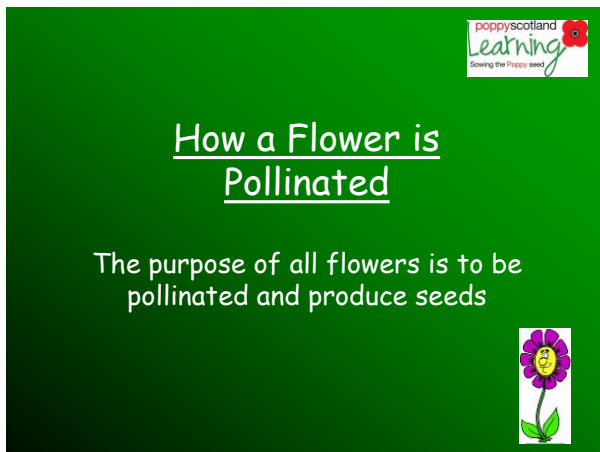
Poppy seeds can be ordered for free from the Poppyscotland Learning website via this link:

<http://learning.poppyscotland.org.uk/resources/order-education-pack/>

Introduction

Through this activity the pupils will learn about plant reproduction and how pollination can happen. The children may then be able to collect seeds from the poppies in order to re-sell in the school.

Click on the PowerPoint presentation directly below entitled 'How a flower is pollinated' to learn how pollination happens:



Now ask children to look at the website below to find out more information:

http://www.bbc.co.uk/bitesize/ks2/science/living_things/plant_life_cycles/play/

Identify the parts of a poppy flower challenge

Your challenge

Your teacher will have discussed with you the common parts of a flower and then introduced to you the more detailed parts. You are now going to access a BBC website and dissect a flower in order to gain information about each part's name and purpose. As you work through the activities take notes as you will need these for the follow up task.

Success criteria

Work in pairs or independently to:

- Access http://www.bbc.co.uk/bitesize/ks2/science/living_things/life_cycles/play/
- Drag each label to the correct part of the flower.
- Click on each label's magnifying glass and take notes for each.
- Complete the quiz at the end.

Follow up task

Now that you have more knowledge of the different parts of a flower and their purpose you are going to use this information to create a detailed drawing of a cross section of a plant.

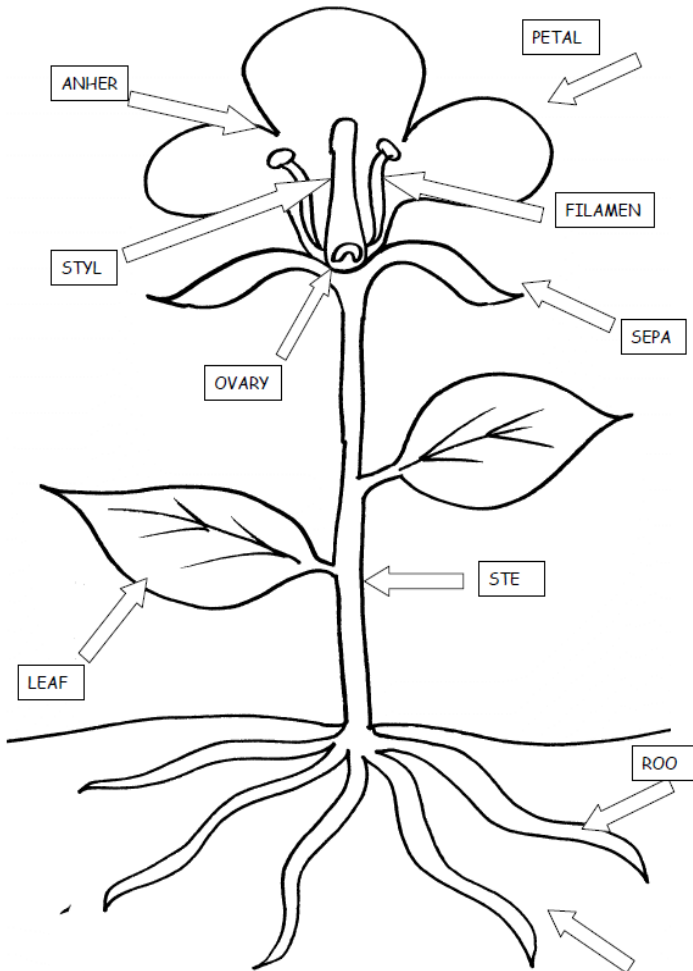
The diagram of a poppy flower (see next page) shows you what a cross section looks like, so use this to help you draw your own.

- You will notice that some of the word labels in the diagram below used to describe each part of the poppy flower are incomplete. Please complete these.
- Next to each label you are then going to transfer your notes so that there is a description to accompany each flower part's label.

Identify the parts of a poppy flower challenge

Your challenge

Diagram of poppy flower



Learning intention

I can identify and describe the different parts of a flower.

Success criteria

Working independently:

- Make a detailed drawing of a flower's cross section using a pencil.
- Label the nine parts of a flower.
- Write detailed descriptions to accompany each label.

Identify the parts of a poppy flower challenge

Peer marking exercise / self-assessment

Tick all that apply

Experiences and outcomes

- I have investigated the lifecycles of plants. **SCN 2-14a**
- I can recognise the different stages of a plant's development. **SCN 2-14a**
- I can identify the different parts of a flower. **SCN 2-14a**
- I can describe the different parts of a flower. **SCN 2-14a**
- I can make a detailed drawing of a flower's cross section using a pencil. **SCN 2-14a**

What I did best:

I am still working on: