

Parts Of The Poppy Flower Challenge



Teacher's Notes

The Big Question: What is the significance of the poppy? **Level:** First

Experiences and Outcomes

I can convey information, describe events or processes, share my opinions or persuade my reader in different ways.

LIT 1-28a / LIT 1-29a

I can help to design experiments to find out what plants need in order to grow and develop. I can observe and record my findings and from what I have learned I can grow healthy plants in school.

SCN 1-03a

Additional Resources

The Parts of the Poppy Flower Word Bank Challenge - below
Poppy seeds can be ordered from the PoppyScotland Learning website:

www.poppyscotland.org.uk/learning

Introduction

Before the children are involved in the following activities, they should share and discuss their knowledge of the poppy. Along with children's prior knowledge the following should be discussed:

- It is a flower which grows wild outside.
- It grows from a seed and produces a red flower.
- It is used to remember people who have been in war or conflicts.
- Plastic replicas are sold in November to raise money for ex-service personnel and their families.
- It became a symbol for wars after it grew in a place called Flanders Fields in Belgium and France once a war had finished.
- It symbolises new life.

Parts of the poppy flower (Science)

Discuss with the children what parts of a flower they already know. Their responses may include petals, stem, leaves and roots. With the class, create a large poppy flower for part of a wall display and get the children to write the labels they already know. **The Parts of the Poppy Flower Diagram below** gives an example of what you may wish the display to look like.

Then introduce the other parts of a flower and add these labels to the class's display. You may wish to display this on the interactive whiteboard.

Parts Of The Poppy Flower Challenge



Children can then individually try to label a picture of a poppy flower using the Word Bank Challenge below.

Learning Intention

I am learning about the different parts of a poppy

Success Criteria

I can label the different parts of a poppy and talk about them

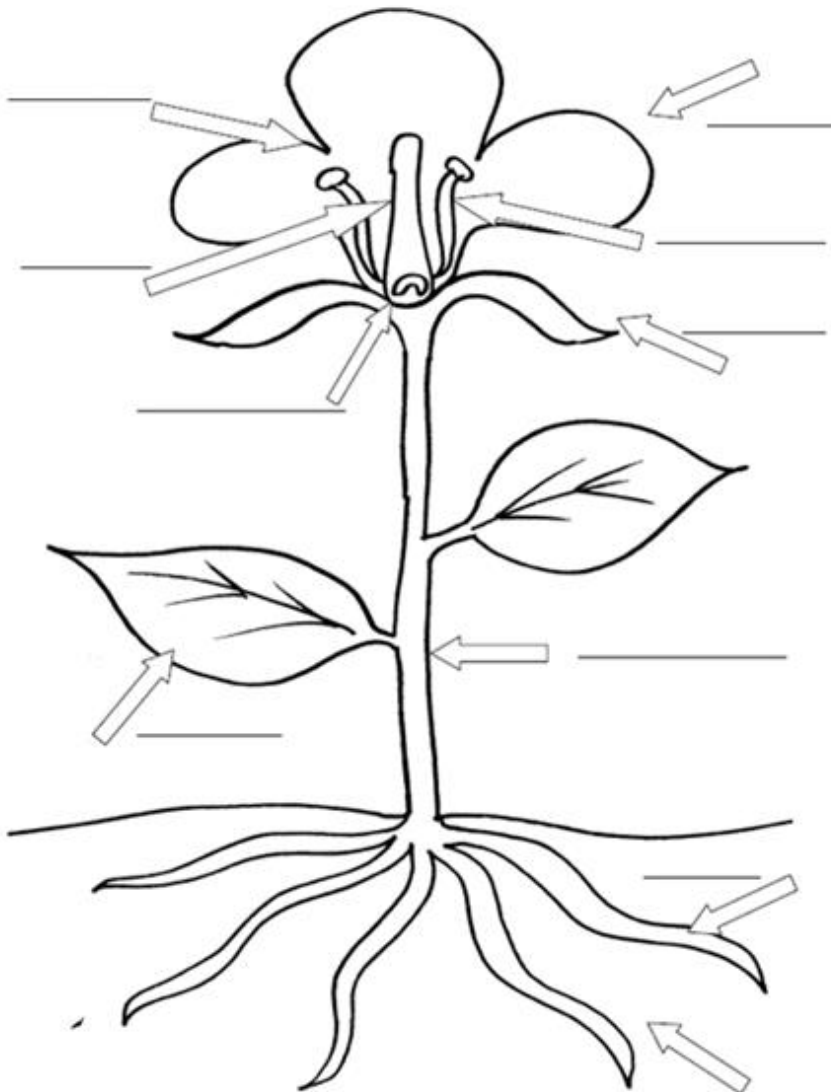
Parts Of The Poppy Flower Challenge



Word Bank Challenge

Match the words below to the correct part of the Poppy drawing. Then write in the word next to the correct part of the poppy:

Petal **Stem** **Leaf** **Root** **Style** **Sepal** **Stamen** **Stigma** **Ovary**



Parts of the Poppy Flower Diagram

Parts Of The Poppy Flower Challenge



What Progress Have I Made Today?

Which box have you achieved today?

Early Level

I can name basic structures of plants. Some plant parts are....

1st Level

I can label the many different parts of the Poppy.

2nd Level

I can provide examples of how the Poppy and other plants have benefited our society.

Some examples are...

Parts Of The Poppy Flower Challenge



What Progress Have I Made Today?

Peer Marking Exercise / Self-Assessment

Tick all that apply

I can convey information, describe events or processes, share my opinions or persuade my reader in different ways.

LIT 1-28a / LIT 1-29a

I can help to design experiments to find out what plants need in order to grow and develop. I can observe and record my findings and from what I have learned I can grow healthy plants in school.

SCN 1-03a